

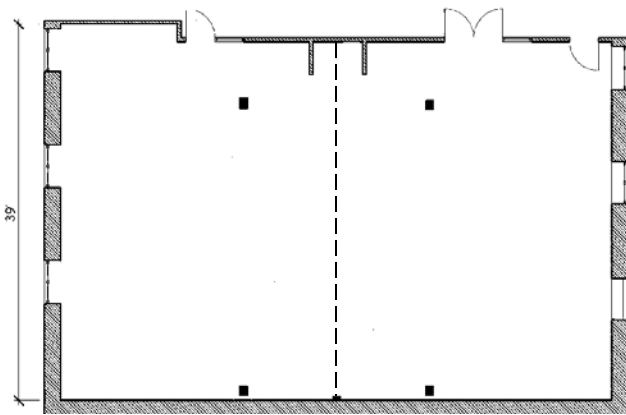


**CRADDOCK TERRY
HOTEL**
AND EVENT CENTER

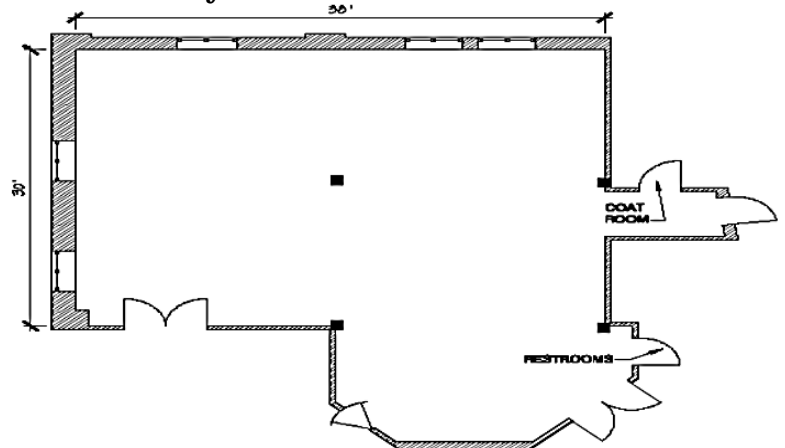
The Event Center is located in the historic William King Jr. Tobacco Warehouse, est. 1896. This magnificent structure was built by Colonel William King, Jr., Manager of the Imperial Tobacco Company. It spans downtown Lynchburg's unique granite bluff. The two lower levels feature walls of massive granite blocks, while the upper four levels display handsome handmade brick. Arched casement windows provide stunning views of the cityscape and riverfront. The 34,600 square foot building is registered as a historic landmark.

The Event Center offers luxurious and comfortable facilities that will provide your business group or social gathering an experience that is unique, pleasurable and memorable. Flexible conference, banquet and meeting rooms are capable of hosting an array of group sizes. Granite Hall, easily divisible into two smaller rooms, and Riverside Foyer are fully outfitted with state-of-the-art audio/video capabilities. A dedicated banquet kitchen is ready to provide diverse menus for any style function. The Event Center caters to discerning guests who seek a high level of service excellence and attention to detail. From organizing business meetings to planning the wedding of a lifetime, a seasoned team of professionals awaits the opportunity to deliver an experience far from ordinary.

Granite Hall



Riverside Foyer



Room Name	Dimensions	Sq. Ft.	Height	Theater	Classroom	Banquet	Cocktail
Event Center:							
Granite Hall	56' x 39'	2,184	14'	235	120	120-140	250
Granite Hall A	28' x 39'	1,092	14'	118	60	60	N/A
Granite Hall B	28' x 39'	1,092	14'	118	60	60	N/A
Riverside Foyer	38' x 35.5'	1,349	12.5'	100	35	64	130
Shoemakers:							
The Wingtip	24' x 41.5'	530	N/A	N/A	N/A	45-48	N/A
The Oxford	12' x 18'	216	N/A	N/A	N/A	16	N/A
The Loafer	10.5' x 19'	200	N/A	N/A	N/A	12	N/A
WaterStone:							
Kanawha Room	14.5' x 33'	479	15'	N/A	N/A	20	50